

4. Access the radio terminals via Ethernet



1. Confirm that your PC has Java VM 1.6.0 or later installed:

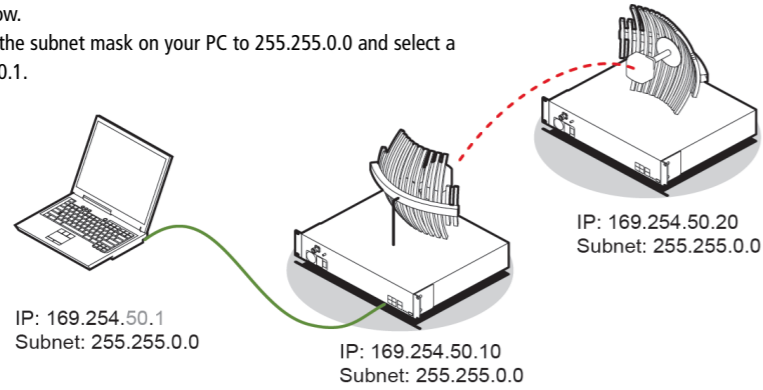
IMPORTANT

In order to communicate via Ethernet, each piece of equipment must have compatible IP addresses on the same subnet. The radio terminals are pre-configured with one of the IP addresses and the subnet shown below.

To connect to the radio terminal, set the subnet mask on your PC to 255.255.0.0 and select a compatible IP address e.g. 169.254.50.1.

Subnet			
255	255	0	0
169	254	50	20
169	254	50	10
169	254	50	1

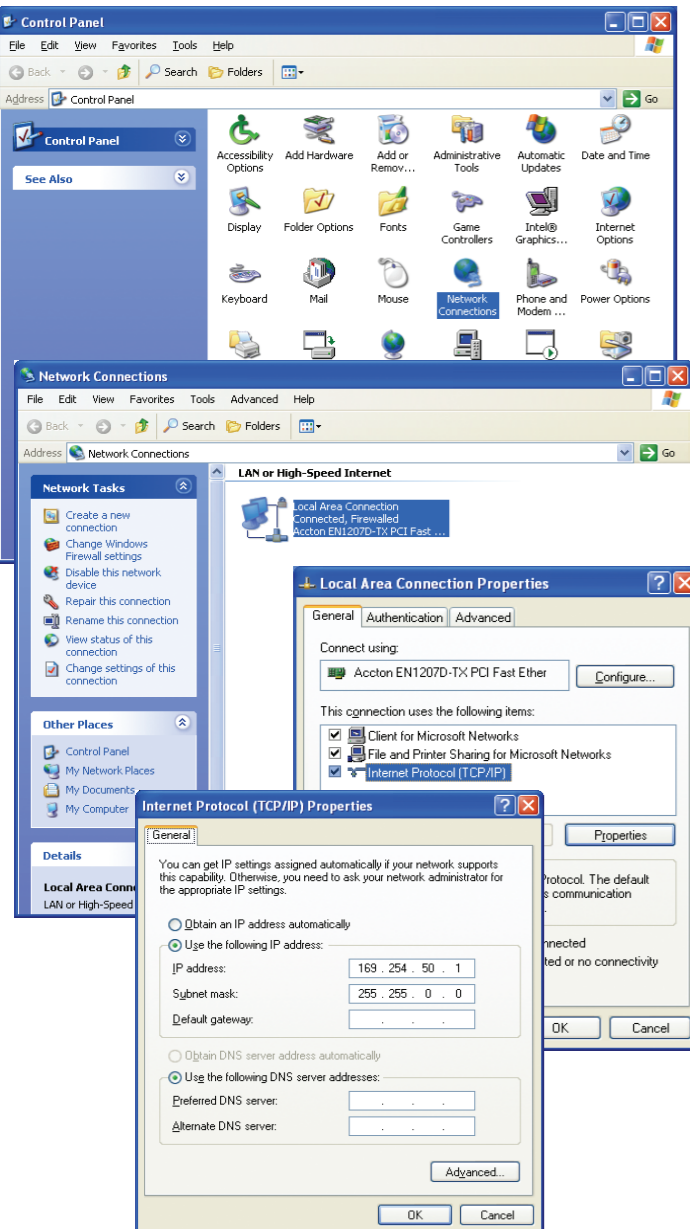
IP addresses			
169	254	50	1
169	254	50	10
169	254	50	20



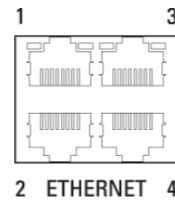
To setup the IP addresses on your PC, open the Windows Control Panel > Network Connections and right click on your Local Area Connection (primary network connection).

Select Properties > Internet Protocol (TCP/IP) and click Properties.

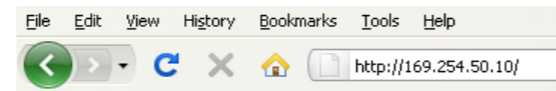
In the Internet Protocol (TCP/IP) Properties window, set up your PC IP address and Subnet mask as shown below.



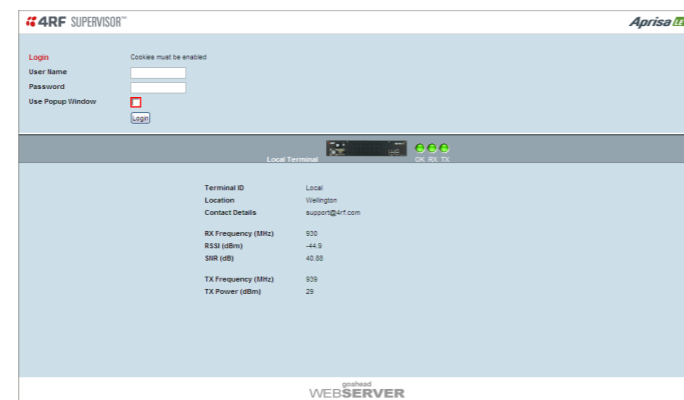
2. Using the Ethernet cable, connect the PC's Ethernet port to one of the radio terminal's Ethernet ports.



3. Start your web browser and in the address field, enter the radio terminals IP address.



The following screen should open from which you can login to the radio terminal.



You are now ready to start configuring your radio link.

Please refer to the Aprisa LE User Manual for details on how to change settings and optimise the performance of your Aprisa LE link.

If the above screen does not open, refer to the Aprisa LE User Manual and follow the steps in the 'Managing the Terminal' section titled 'Changing the Terminal's IP Address'.

Aprisa LE



Quick Start Guide

Contents

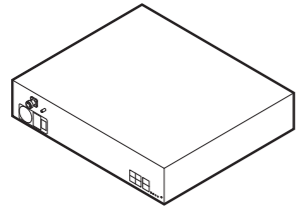
Follow these steps to install and access your Aprisa LE radio link:

1. Check the box contents
2. Install the radio terminals
3. Apply power to the radio terminals
4. Access the radio terminals via Ethernet

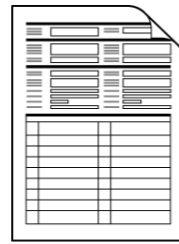
1. Check the box contents

Each Aprisa LE radio is shipped to you in a single box containing the following items:

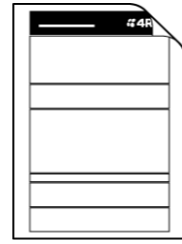
Aprisa LE Radio



Configuration Sheet

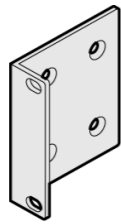


Commissioning Form



Accessory kit containing the following:

- Rack mount bracket [x2]



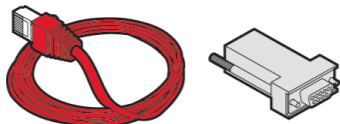
- Bracket fastening screw [x4] (countersink PZD2)



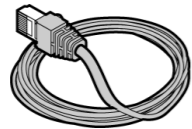
- Nylon washer [x6]



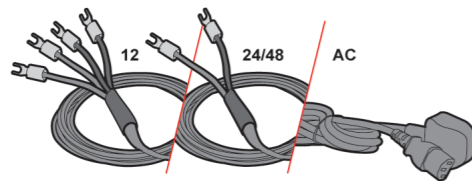
- Setup cable with RJ-45 to DB-9 adaptor



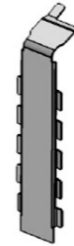
- Ethernet cable spare



- Power cable 12 VDC, 24/48 VDC or AC



- Interface Slot Blanking plate [x2]



- M6 caged nut [x4]



- M6 x 8 (PZD3) [x6]



- M2 Allen key (for fascia and lid screws)



- 100 mm cable tie [x20]



For more information, please refer to the Aprisa LE User Manual available from the 4RF website <https://www.4rf.com/secure> (login required).

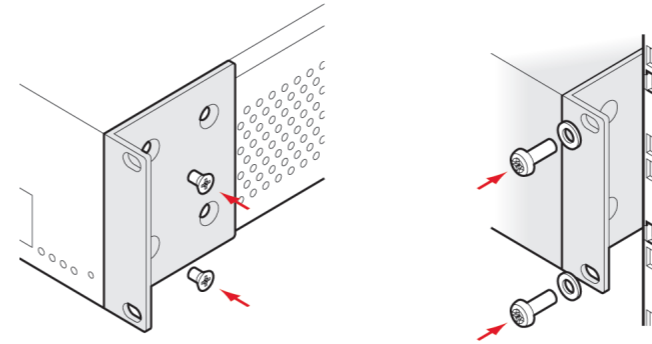
Note: The Aprisa LE radio operates within frequency bands that require a site license be issued by the radio regulatory authority with jurisdiction over the territory in which the equipment is being operated. It is the responsibility of the user, before operating the equipment, to ensure that where required the appropriate license has been granted and all conditions attendant to that license have been met.

Hereby, 4RF Limited declares that the Aprisa LE digital radio is in compliance with Directive 2014/53/EU. The full text of the EU declaration of conformity is available at the internet address <http://www.4rf.com/library/en>

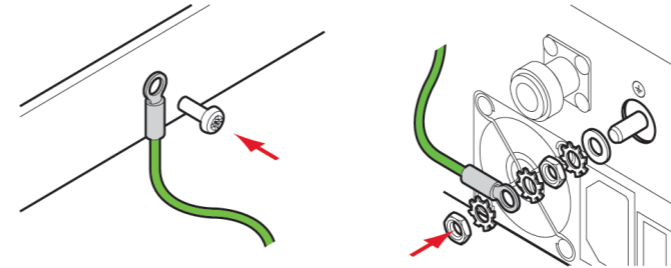
	BE BG CZ DK DE
	EE IE EL ES FR
	HR IT CY LV LT
	LU HU MT NL AT
	PL PT RO SI SK
	FI SE UK

2. Install the radio terminals

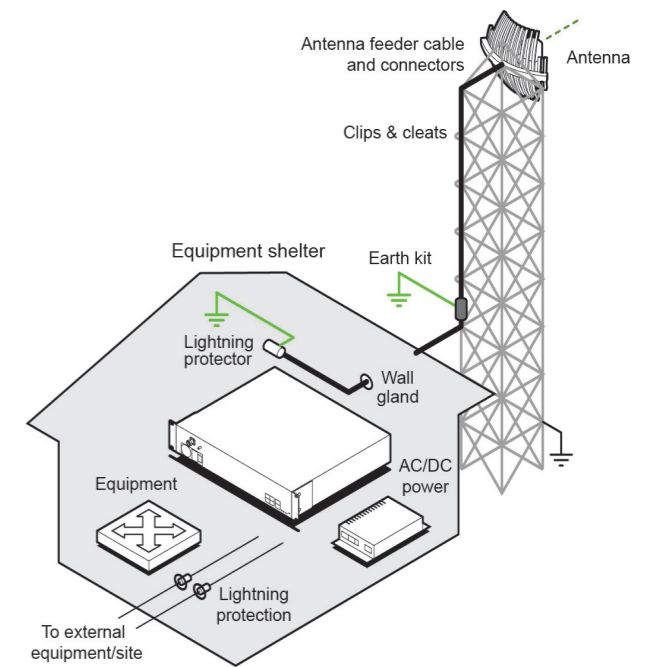
1. Fasten the mounting brackets to the radio terminal and mount it in the rack



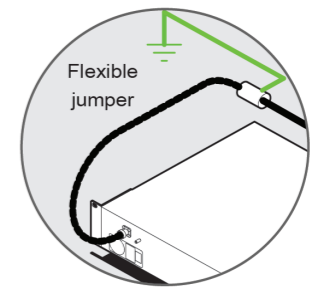
2. Connect the radio terminal's earth stud to the rack with the Earth cable using the 8 mm spanner



3. Confirm that your antenna, feeder cable, weatherproofing, earthing and lightning protection are correctly installed.

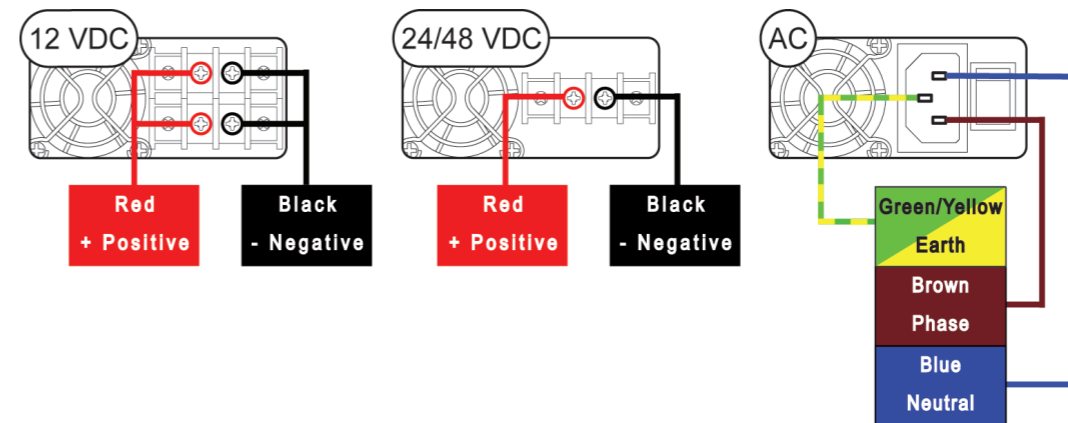


4. Connect the flexible coaxial jumper cable between the lightning protector and radio antenna connector.



3. Apply power to the radio terminals

1. Connect the external power supply to the radio terminal using the terminated power cable as illustrated below.



2. For DC power supplies, switch on the external power supply. For AC power supplies, turn the radio power switch on.